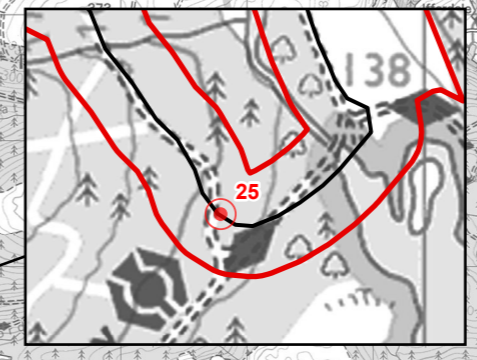
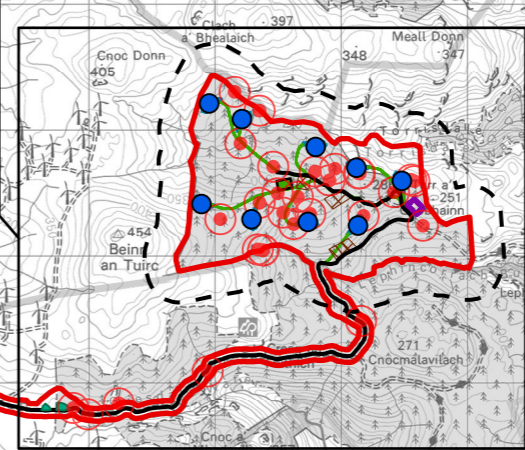


No.	Note
1	Rhododendron <i>Rhododendron ponticum</i>
2	Bottle sedge <i>Carex rostrata</i> dominated area in blanket bog
3	Possible pine marten <i>Martes martes</i> /fox <i>Vulpes vulpes</i> scat
4	Hare <i>Lepus</i> sp. scat
5	Otter <i>Lutra lutra</i> spraint next to small watercourse. Path leads off site with three more potential spraints along path
6	Three-four otter spraints on bank of small burn
7	Common frog <i>Rana temporaria</i>
8	Two rhododendron bushes
9	Otter spraint next to watercourse
10	Rhododendron
11	Otter spraint on bank of watercourse
12	Common lizard <i>Zootoca vivipara</i>
13	Rhododendron bushes
14	Common frog
15	Rhododendron bushes
16	Rhododendron bushes
17	Rhododendron bushes along track
18	Rhododendron bushes
19	Rhododendron bushes
20	Rhododendron bushes
21	Otter spraint near small stream
22	Two rhododendron bushes
23	Rhododendron bushes on either side of track
24	Rhododendron bushes on either side of track
25	Inside bend of track is MG9 <i>Holcus lanatus</i> - <i>Deschampsia cespitosa</i> grassland. Moderate GWDTE
26	Patch on north side of the track is M15 <i>Scirpus cespitosus</i> - <i>Erica tetralix</i> wet heath. Moderate GWDTE
27	Rhododendron on down side of verge
28	Suitable habitat for pine marten den
29	Small area of M6c <i>Carex echinata</i> - <i>Sphagnum recurvum</i> / <i>auriculatum</i> mire, with a <i>Juncus effusus</i> sub-community. High GWDTE. Rocky bluff in this area is suitable for adder <i>Vipera berus</i> and common lizard
30	Rhododendron seedlings at junction



### Legend

- Application Boundary
- Proposed Wind Turbines
- Existing Access Tracks To Be Upgraded
- Proposed Access Tracks
- Hardstanding
- Temporary Compound
- Borrow Pit Search Area
- Substation (Including Battery Storage)

### Additional Areas

- Temporary Material Storage Areas
- Security Compound

### Target Notes

- Field Survey Area (250 m)
- Target Note



Figure Title	
Target Notes	
Project Name	
West Torrisdale Wind Farm EIA Report	
Project Number	Figure No.
1700003767	6.5
Date	Prepared By
May 2023	AB
Scale	Issue
1:60,000 @A3	1
Client	
<b>ESB</b>	

1700003767-RAM-MA-1A-Fig.5.1TargetsNotes\_04.pagx