

Legend:

- Site Boundary
- + Proposed Turbine Locations
- 5 km Intervals from Outer Turbines
- 45 km LVIA Study Area
- o Viewpoint
- / 53.5° Field of View
- \ 90° Field of View

Potential Turbine Visibility (Tip Height)

- 1 - 4 Turbines Visible
- 5 - 8 Turbines Visible
- 9 - 12 Turbines Visible
- 13 - 16 Turbines Visible

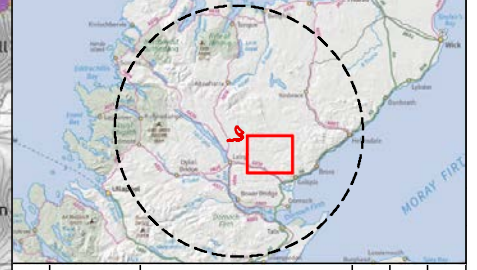
Notes:
 The ZTV is calculated to turbine tip height (200 m for T1-T11, T16 and 180 m for T12-T15) from a viewing height of 2 m above ground level.

The terrain model assumes bare ground and is derived from OS Terrain 5 height data (obtained in September 2021).

Earth curvature and atmospheric refraction have been taken into account. The ZTV was calculated using ArcMap 10.8.1.

Notes:
 This map contains data from the following sources:
 ESB, RSK, LUC, NatureScot, Sustrans, LDWA, HLC

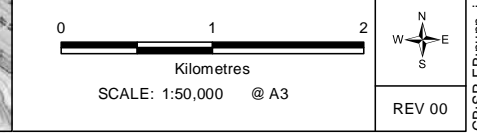
Coordinate System: British National Grid
 Projection: Transverse Mercator
 Datum: OSGB 1936
 Units: Meter



| Rev | Date | Description | Drn | Chk | App |
|-----|------------|-------------|-----|-----|-----|
| 00 | 22/10/2021 | First Draft | JN | NE | NE |

Chleansaid Wind Farm

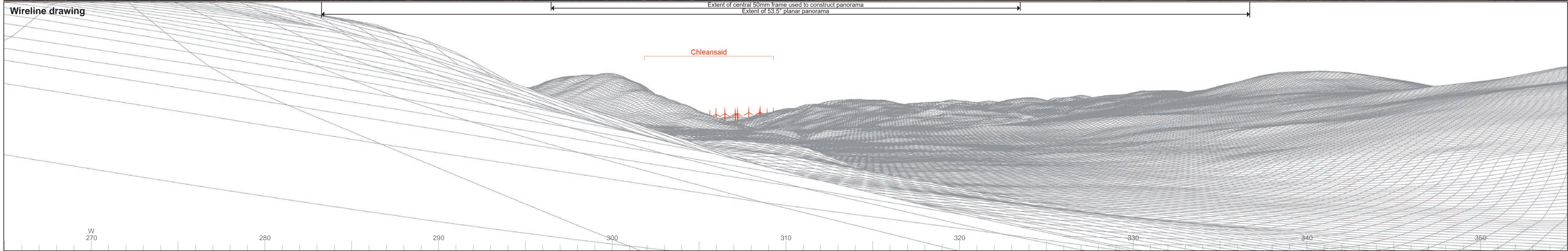
TITLE:
 Figure 6.2.7: Viewpoint 7 Rhilochan





Baseline photograph

This image provides landscape and visual context only



Wireline drawing

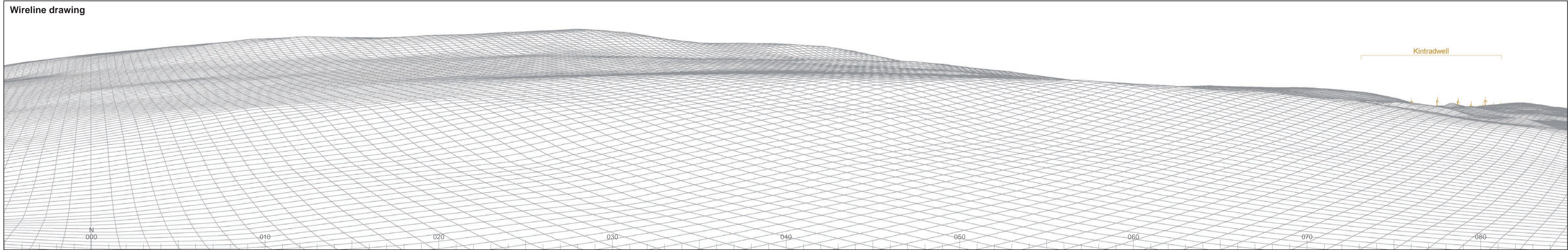
Extent of central 50mm frame used to construct panorama
Extent of 53.5° planar panorama

Chleansaïd

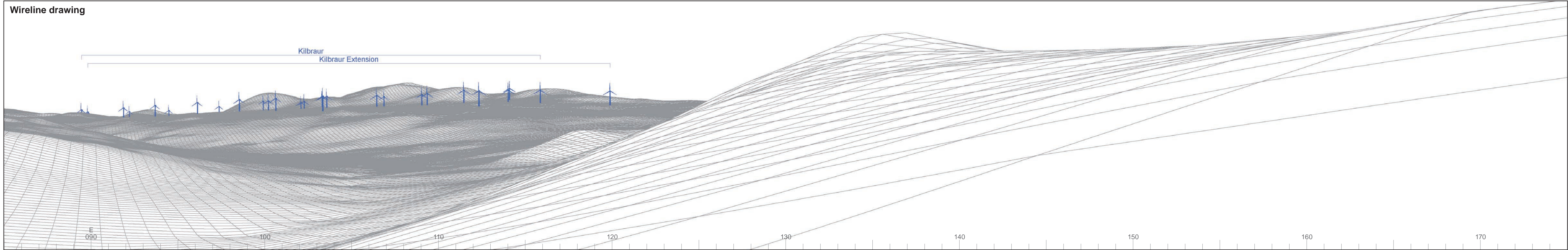
W 270 280 290 300 310 320 330 340 350

Chleansaïd Wind Farm
Figure: 6.2.7a
Viewpoint 7: Rhilochan

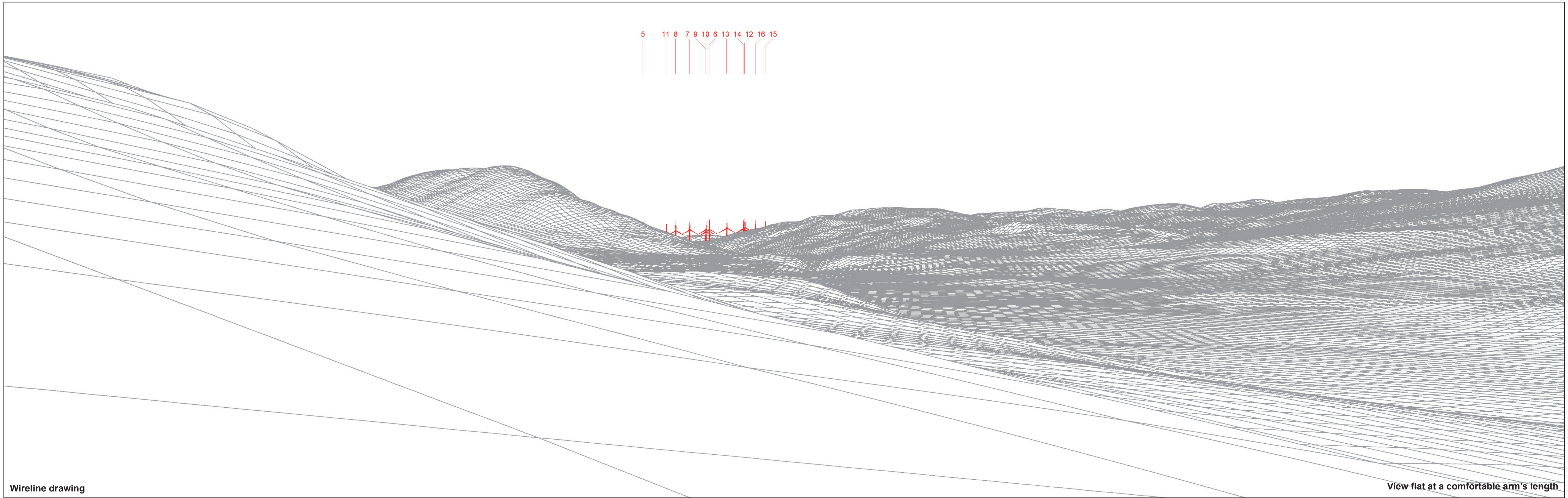
© Crown copyright and database rights 2021. Ordnance Survey data. Licence number: 0100051673



© Crown copyright and database rights 2021. Ordnance Survey data. Licence number: 0100051673



5 11 8 7 9 10 6 13 14 12 16 15



Wireline drawing

View flat at a comfortable arm's length

© Crown copyright and database rights 2021 Ordnance Survey data Licence number: 0100051673



OS reference: 272920E 908934N
AOD: 158 m
Direction of view: 310°
Nearest turbine: 13.05 km
Horizontal field of view: 53.5° (planar projection)
Principal distance: 812.5 mm
Paper size: 841 x 297 mm (half A1)
Correct printed image size: 820 x 260 mm

Wind Farm Developments key
(by status):
Proposed scheme
Operational
Under construction
Consented
Application
Appeal/PLI

Chleansaid Wind Farm
Figure: 6.2.7d
Viewpoint 7: Rhilochan