

- Legend:**
- Site Boundary
 - + Proposed Turbine Locations
 - 5 km Intervals from Outer Turbines
 - 45 km LVIA Study Area
 - o Viewpoint
 - / 53.5° Field of View
 - \ 90° Field of View
- Potential Turbine Visibility (Tip Height)**
- 1 - 4 Turbines Visible
 - 5 - 8 Turbines Visible
 - 9 - 12 Turbines Visible
 - 13 - 16 Turbines Visible

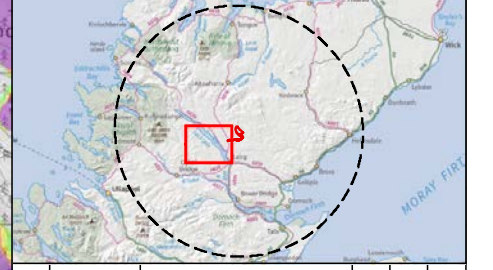
Notes:
 The ZTV is calculated to turbine tip height (200 m for T1-T11, T16 and 180 m for T12-T15) from a viewing height of 2 m above ground level.

The terrain model assumes bare ground and is derived from OS Terrain 5 height data (obtained in September 2021).

Earth curvature and atmospheric refraction have been taken into account. The ZTV was calculated using ArcMap 10.8.1.

Notes:
 This map contains data from the following sources:
 ESB, RSK, LUC, NatureScot, SUSTRANS, LDWA, HLC

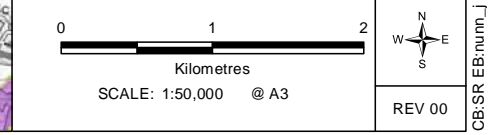
Coordinate System: British National Grid
 Projection: Transverse Mercator
 Datum: OSGB 1936
 Units: Meter

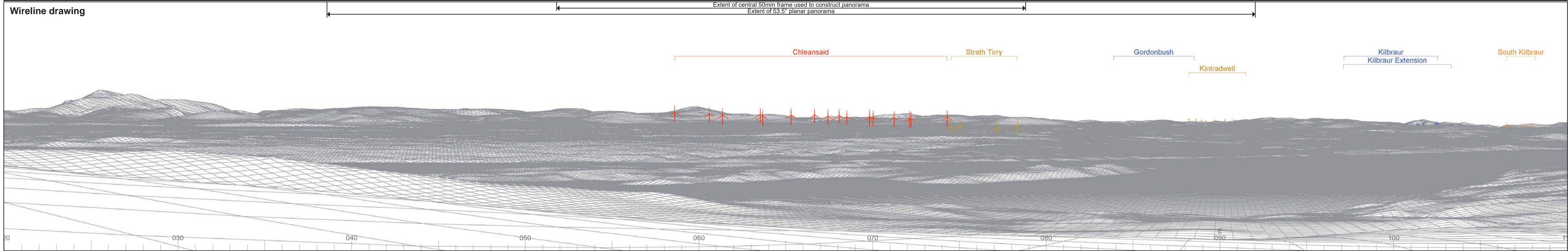
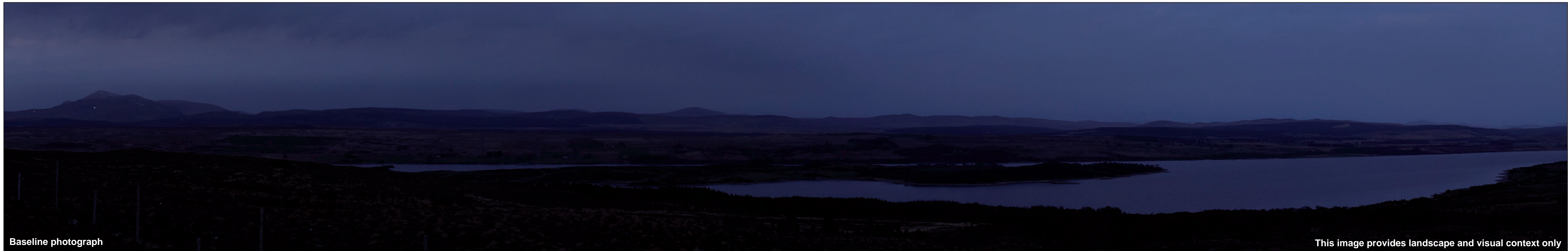


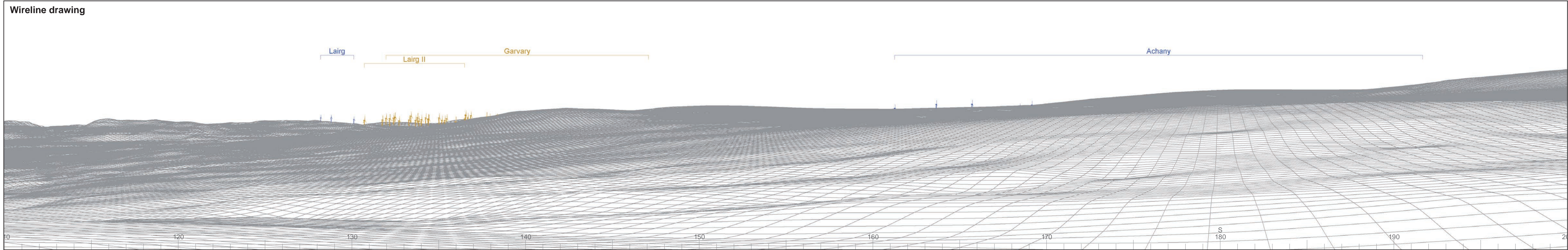
Rev	Date	Description	Drn	Chk	App
00	22/10/2021	First Draft	JN	NE	NE

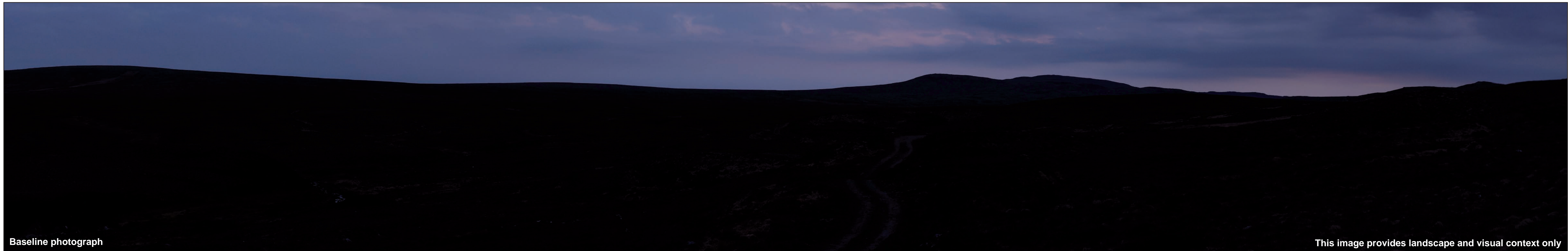
Chleansaid Wind Farm

TITLE:
 Figure 6A.2.2: Viewpoint WLA VP2
 Track to Loch Sgeireach



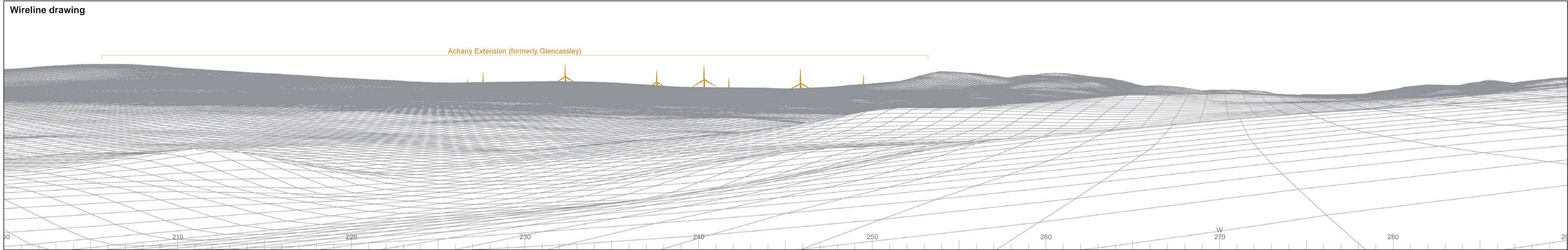






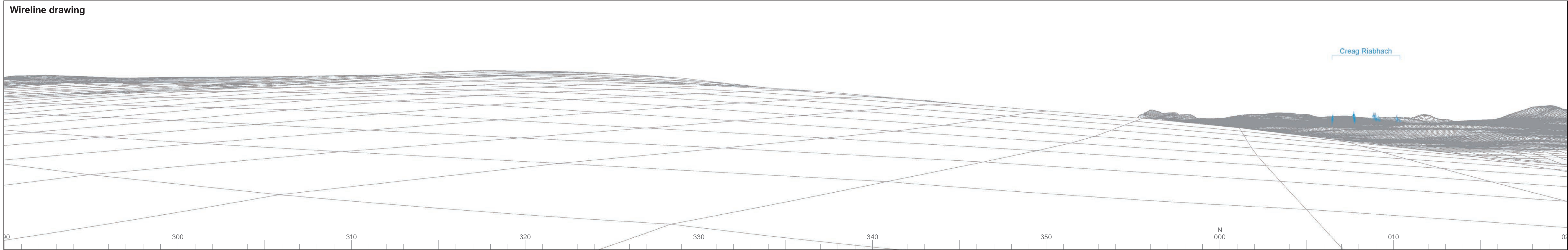
Baseline photograph

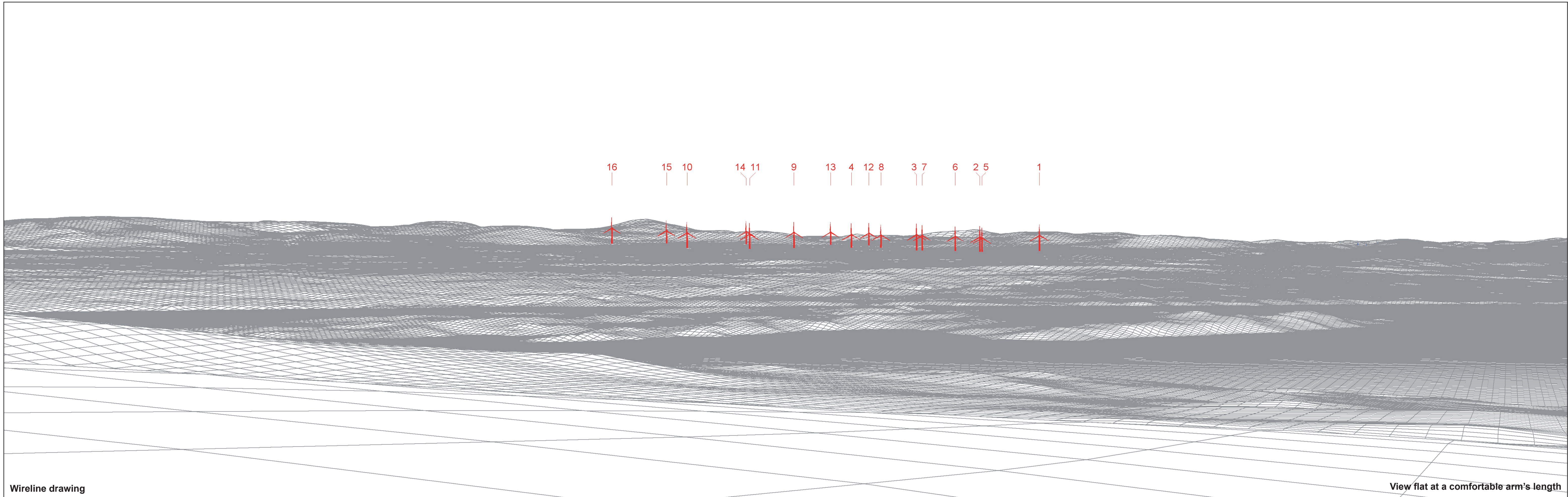
This image provides landscape and visual context only



Wireline drawing

© Crown copyright and database rights 2021. Ordnance Survey data. Licence number: 0100051673





Wireline drawing

View flat at a comfortable arm's length



OS reference: 250278E 912667N
 AOD: 214 m
 Direction of view: 65°
 Nearest turbine: 11.5 km

Horizontal field of view: 53.5° (planar projection)
 Principal distance: 812.5 mm
 Paper size: 841 x 297 mm (half A1)
 Correct printed image size: 820 x 260 mm

Wind Farm Developments key
 (by status):

Proposed scheme	Consented
Operational	Application
Under construction	Appeal/PLI

Chleansaid Wind Farm
 Figure: 6A.2.2e
 WLA Viewpoint 02: Track to Loch Sgeireach

© Crown copyright and database rights 2021 Ordnance Survey data. Licence number: 0100051673



Photomontage - 200 Candela Aviation Hub lighting shown on Turbines 1, 6, 11, 14 and 16

View flat at a comfortable arm's length



OS reference: 250278E 912667N
AOD: 214 m
Direction of view: 65°
Nearest turbine: 11.5 km

Horizontal field of view: 53.5° (planar projection)
Principal distance: 812.5 mm
Paper size: 841 x 297 mm (half A1)
Correct printed image size: 820 x 260 mm

Camera: Nikon D750
Lens: 50mm Fixed Focal Length
Camera height: 1.5 m

Photography Date: 22/04/2021
Photography Time: 21:15:00



Photomontage - 2000 Candela Aviation Hub lighting shown on Turbines 1, 6, 11, 14 and 16

View flat at a comfortable arm's length



OS reference: 250278E 912667N
AOD: 214 m
Direction of view: 65°
Nearest turbine: 11.5 km

Horizontal field of view: 53.5° (planar projection)
Principal distance: 812.5 mm
Paper size: 841 x 297 mm (half A1)
Correct printed image size: 820 x 260 mm

Camera: Nikon D750
Lens: 50mm Fixed Focal Length
Camera height: 1.5 m

Photography Date: 22/04/2021
Photography Time: 21:15:00