

267000

268000

269000

270000

271000

272000

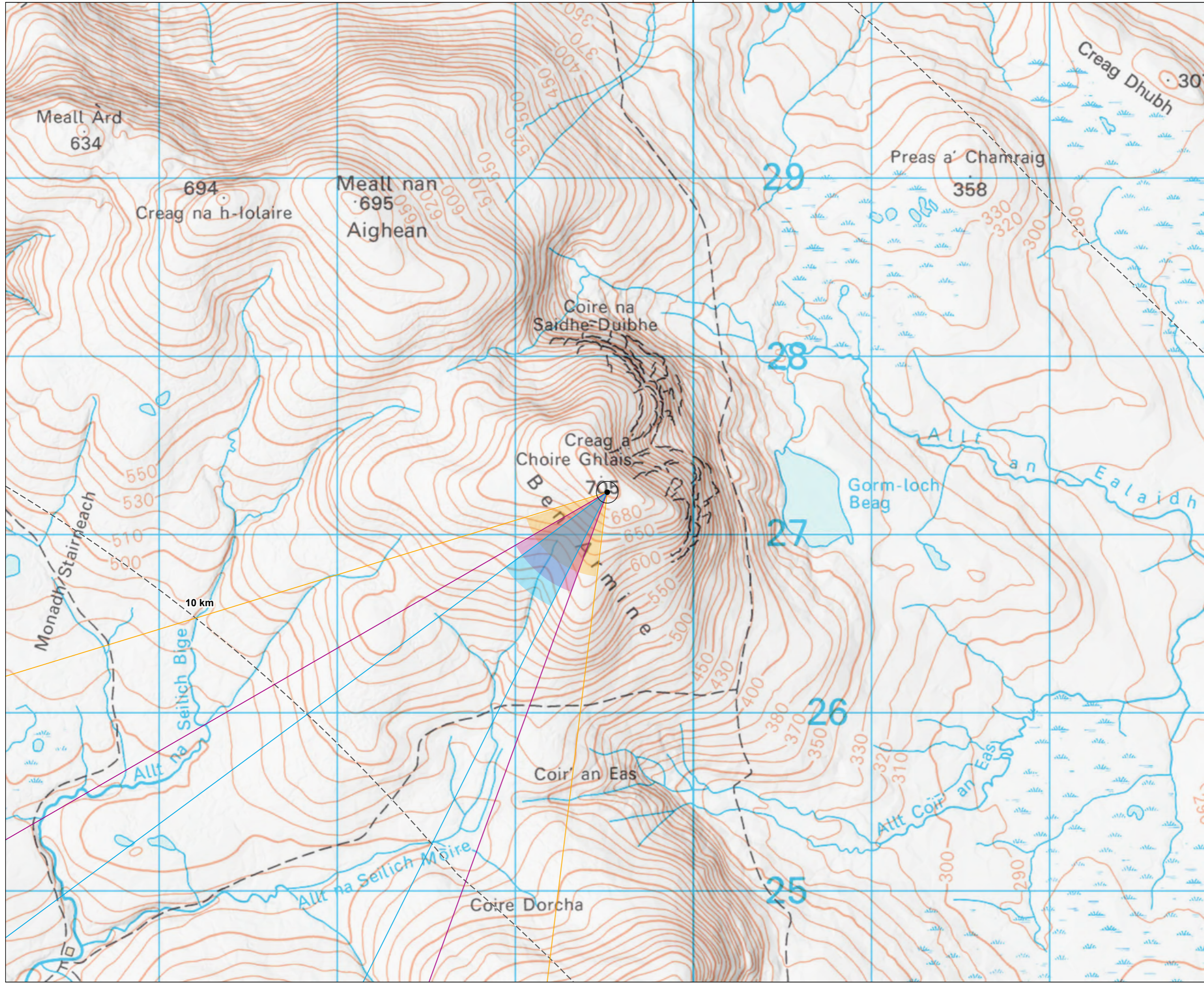
929000

928000

927000

926000

925000



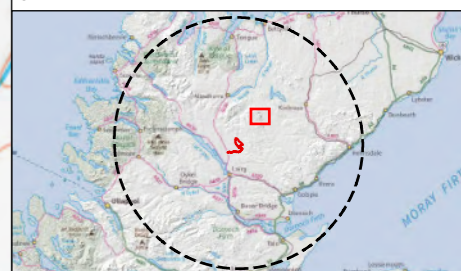
- Legend:**
- Site Boundary
  - ⊕ Proposed Turbine Locations
  - 5 km Intervals from Outer Turbines
  - 45 km LVIA Study Area
  - ∠ 27° Field of View
  - ∠ 39.6° Field of View
  - ∠ 65.5° Field of View

AOD: 704 m  
 E: 269518 N: 927236  
 Nearest Chleansaid turbine: 15  
 Distance to nearest turbine: 12.07 km

VP9 - This viewpoint is located at the summit of Ben Armine. The hill is often access via a long walk in from the east via the B871.

Notes:  
 This map contains data from the following sources:  
 ESB, RSK, LUC, NatureScot, SUSTRANS, LDWA, HLC

Coordinate System: British National Grid  
 Projection: Transverse Mercator  
 Datum: OSGB 1936  
 Units: Meter



Rev	Date	Description	Drn	Chk	App
00	22/10/2021	First Draft	JN	NE	NE

**Chleansaid Wind Farm**



TITLE: Figure 6THC.2.9: Viewpoint 9 Ben Armine

0 0.25 0.5  
 Kilometres

SCALE: 1:20,000 @ A3

REV 00

Extent of 50mm single frame used to construct panorama



Photomontage

OS reference: 269518E 927236N  
 Distance to nearest turbine: 12.07 km

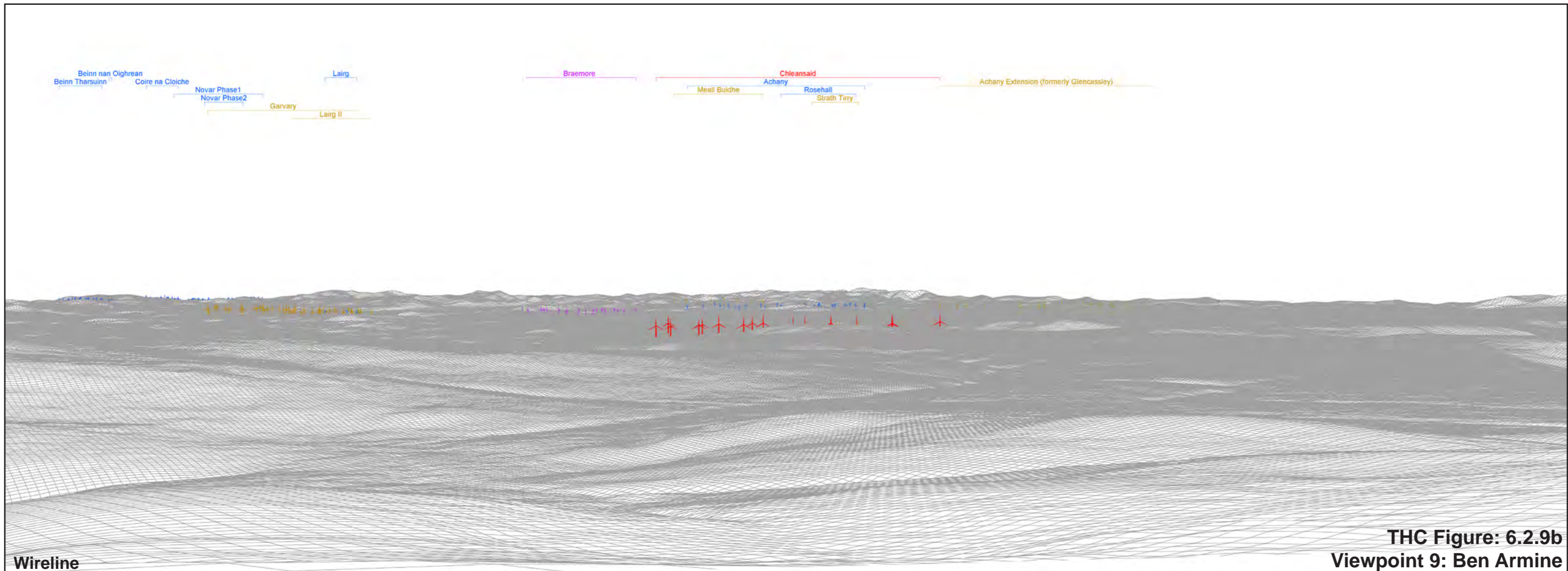
Camera: Sony ILCE-7RM3  
 Focal Length: 50mm vertical (27°) x 28mm horizontal (65.5°)  
 Camera height: 1.5 m

Photography Date: 25/04/2021  
 Photography Time: 10:00

*The images contained on this page and the following page are not representative of scale and distance from the actual viewpoint and show the wind farm development in its wider landscape context only.*



Existing View



Wireline

THC Figure: 6.2.9b  
Viewpoint 9: Ben Armine



OS reference: 269518E 927236N  
Distance to nearest turbine: 12.07 km

Camera: Sony ILCE-7RM3  
Focal Length: 50mm  
Camera height: 1.5 m

Photography Date: 25/04/2021  
Photography Time: 10:00

Chleansaid Wind Farm  
**THC Figure: 6.2.9c**  
**Viewpoint 9: Ben Armine**

When viewed at a comfortable arm's length (approx. 500mm), this printed image is representative of our detailed central vision, but is not representative of scale and distance.



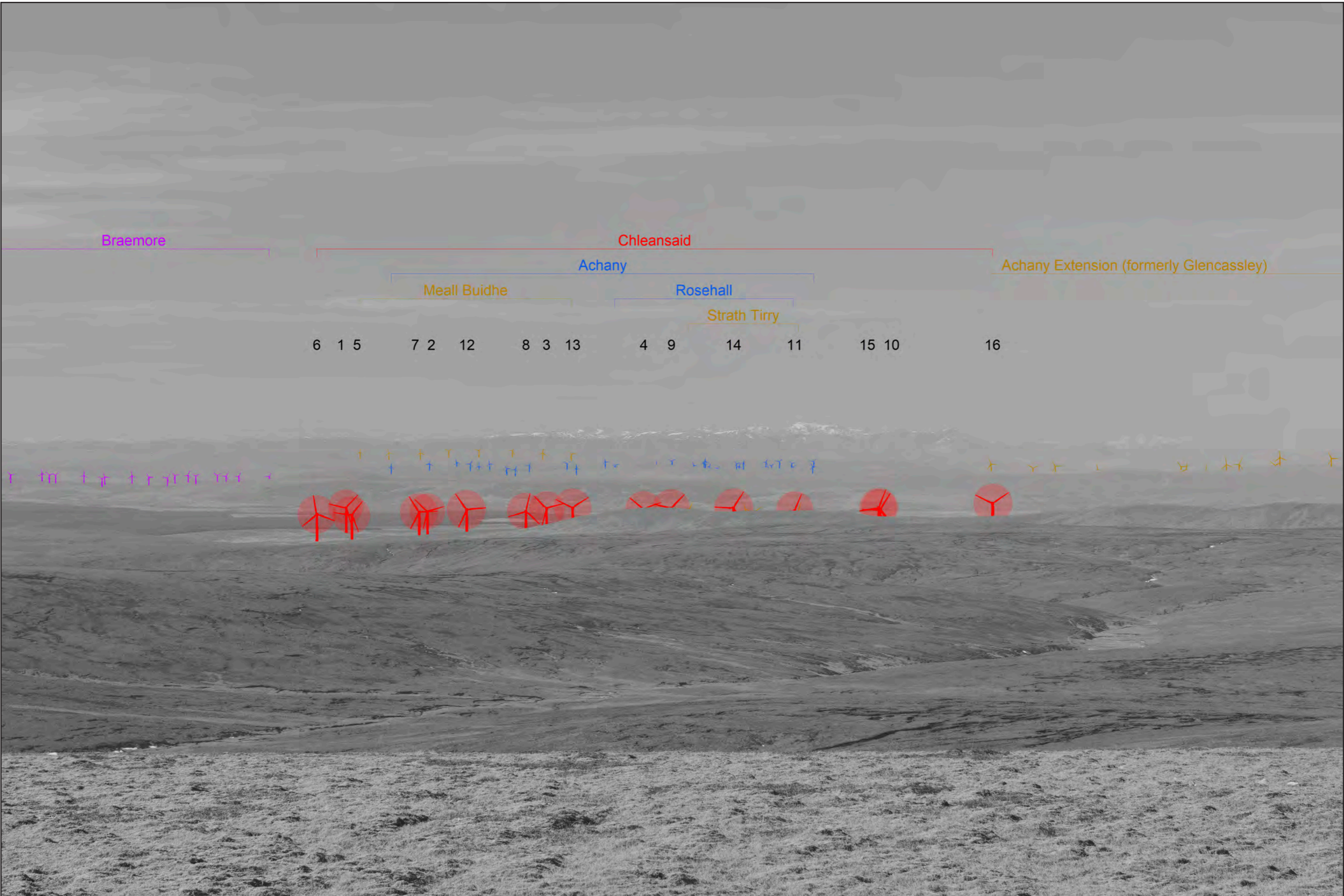
OS reference: 269518E 927236N  
Distance to nearest turbine: 12.07 km

Camera: Sony ILCE-7RM3  
Focal Length: 75mm  
Camera height: 1.5 m

Photography Date: 25/04/2021  
Photography Time: 10:00

Chleasaid Wind Farm  
**THC Figure: 6.2.9d**  
**Viewpoint 9: Ben Armine**

This image should be viewed at a comfortable arm's length (approx. 500mm)



OS reference: 269518E 927236N  
 Distance to nearest turbine: 12.07 km

Camera: Sony ILCE-7RM3  
 Focal Length: 75mm  
 Camera height: 1.5 m

Photography Date: 25/04/2021  
 Photography Time: 10:00

Chleainsaid Wind Farm  
 THC Figure: 6.2.9e

This image should be viewed at a comfortable arm's length (approx. 500mm)

Viewpoint 9: Ben Armine - Monochrome Analysis