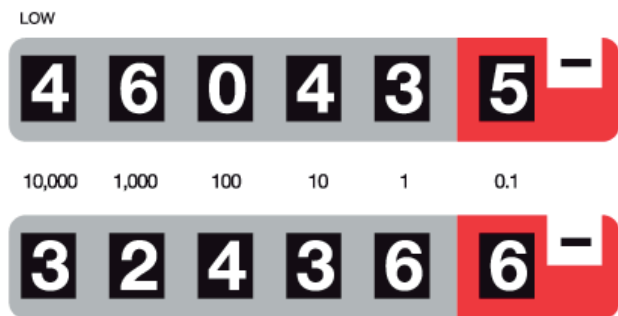


# Electricity - How to read a Multirate Meter

## Mechanical Electricity Meter

If your tariff gives you lower-priced off-peak electricity such as ECO20:20 or Economy 7 your meter may have two rows of figures as shown below:



NORMAL

First reading is 46043

Second reading is 32436

If your meter has more than one row of figures write down all the numbers from left to right in each row, ignoring any numbers in red or in a red surround. The previous meter readings on your bill will indicate which is 'day rate' and which is 'night rate'.

## Electronic Electricity Meter

Here's a typical electronic meter display.

Rate 1

46043.5

Rate indicator: Rate1

Reading: 46043

Some two rate (or 'dual rate') meters only have 1 digital display. They will either flash up the different rate readings in a cycle or have a button that you need to press to make the display cycle through the readings for the different rates.

To read the meter write down the numbers shown left to right, for each reading but ignoring the digit after the decimal point.

To read this meter:

- write down the numbers shown left to right but ignoring the digits after the decimal point
- write down the associated rate indicator
- repeat for all displays

(Source: [www.citizensadvice.org.uk](http://www.citizensadvice.org.uk))